

Sorting Sounds



s



a



t



p



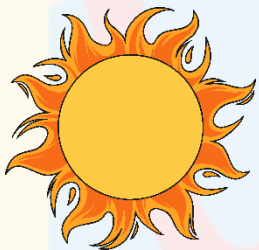
i



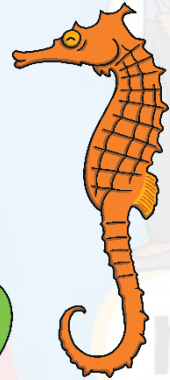
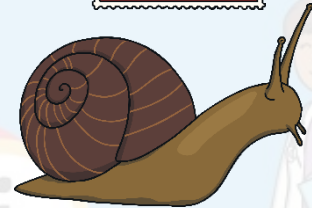
n

twinkl

Click the pictures that begin with 's' to move them into the middle.



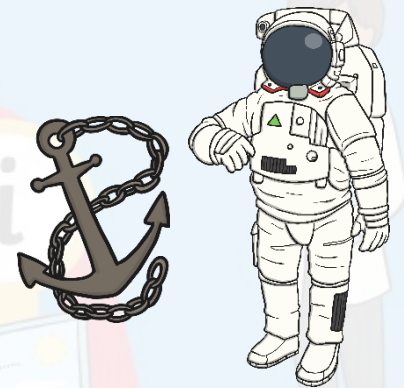
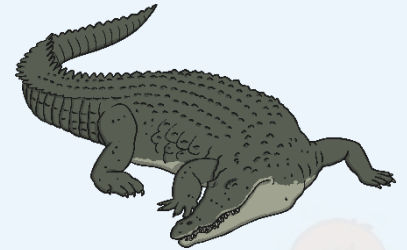
S



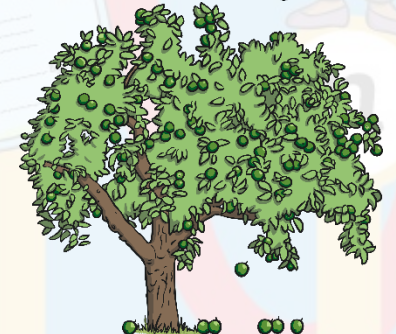
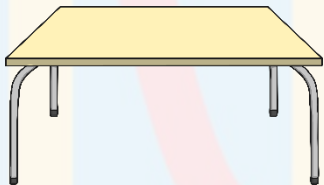
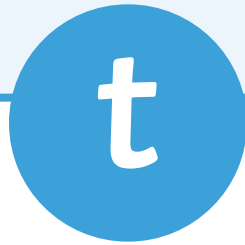
Click the pictures that begin with 'a' to move them into the middle.



a

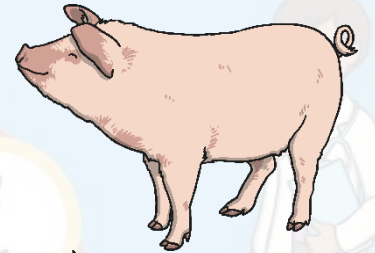
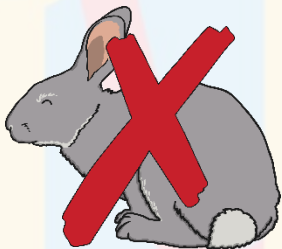
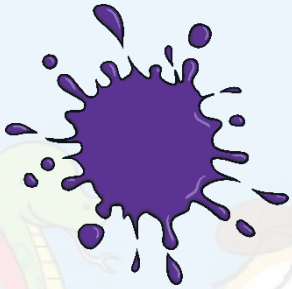
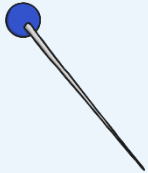


Click the pictures that begin with 't' to move them into the middle.



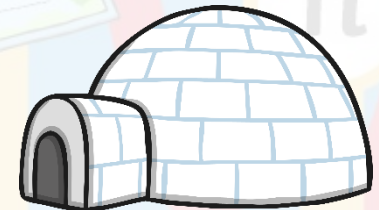
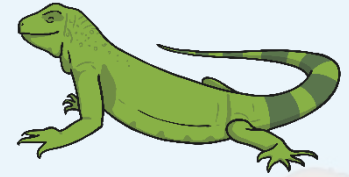
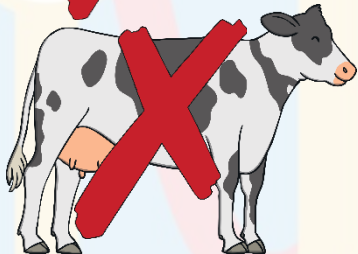
Click the pictures that begin with 'p' to move them into the middle.

p



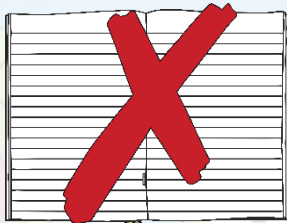
Click the pictures that begin with 'i' to move them into the middle.

i

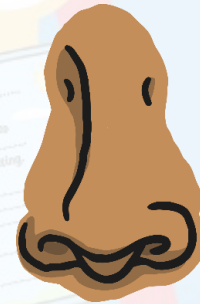


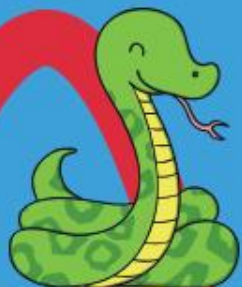
Click the pictures that begin with 'n' to move them into the middle.

n



9





s



a

twinkl

t



p

i



n

