



ELLEN WILKINSON PRIMARY SCHOOL LOCKDOWN NEWSLETTER 2 - 13th January 2021



Dear Parents & Carers,

I hope you are managing to keep safe and well. We know this is a challenging time for everyone and we thank you for your continued support. Please take time to look through the whole newsletter as there are quite a number of updates this week and these have been grouped together on the following pages:

- ★ Learning
- ★ Technology (laptops and devices)
- ★ EYFS (applying for reception, nursery survey and Children's Centre updates)
- ★ General Information

Take care and stay safe.

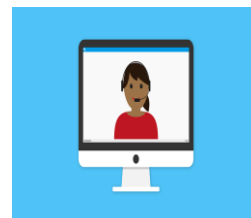
Sue Ferguson

Learning

Remote Learning Agreement

We know that supporting children at home is difficult and even harder when it's online live lessons! To help we have updated our Home Learning Agreement to make things a little clearer. Below are a few points to particularly consider:

- **Clothing** - please make sure children are fully clothed not in just their underwear.
- **Somewhere to work** - this one is tricky we know! Away from televisions and other people talking will help where it is possible.
- **Being prepared** - please help your child to be ready with what they need.
- **Eating** - children should have their breakfast, lunch or snack before online school starts (like they would normally). They should not be eating in lessons.
- **Behaviour** - learning is hard and online even more so! If your child is struggling please contact us so we can support them, as we expect all children to behave appropriately in online lessons in the same way they would in a classroom.
- **Adults helping** - the reason we have set our learning up this way is to try and reduce the requirement of parents to have to sit with their children. We are trying to get to a point that once they are logged on you can get on with what you need to do. If you are available to help your child that's great - thank you. But please remember that it should only be children appearing on camera and answering questions.
- **Cameras** - please make sure your child leaves the camera on during direct teaching time. It is almost impossible for staff to know if your child understands, needs help or is even listening if they can't see them.
- **Screen time** - the problem with this approach is the amount of screen time! We will continue to look at how we can reduce this. To start off with we are making a change that **from the week beginning 18th January, Friday afternoons will not be online but will be an art project.** We will send details nearer the time.



Technology

Laptops



- The rest of the DFE supplied devices have now arrived and been distributed.
- We are also reconfiguring and distributing school devices too.
- If you are still struggling to access online learning because of a lack of device and/or having to share it between multiple siblings please use this link to let us know.

<https://forms.gle/cqnJhpVNz8m141wc7> [forms.gle]

- However we still have more requests than devices so please only contact us if you have no other options.
- Because of this, we are only issuing devices to children in years 1 to 6 as Reception and Nursery children do not need to submit any work online and can access Zoom through other devices including phones in order to access live lessons.
- If we manage to have more devices available we will then contact families in these year groups.

Access to mobile data

The Department for Education is running a pilot offer to increase mobile data allowances for children and young people. This scheme is open to children and young people who:

- Don't have access to a fixed broadband connection (Internet through telephone line connection)
- Cannot afford the additional data needed to access educational resources or social care services
- Have access to a mobile device that uses a participating network (EE, O2, SMARTY, Virgin Mobile, Sky Mobile, Tesco Mobile, Three, Vodafone)
- Are facing disruption to their face-to-face education, or have been advised not to attend school



The school has to make the application for you so if you would like to apply for additional mobile data please complete this questionnaire by Friday 15th January 2021.

<https://forms.gle/aRkY6TSmjW317Gxd6>



No access to a broadband connection or internet at home.

If you are in this situation please call the main office on 0207 511 9414 as there may be other ways we can support you for this period.

Early Years



Applications for Reception places

Please remember that the National Closing date to apply for an online reception class place is **23.59 pm on Friday 15th January 2021**. If you have not applied please do so quickly using the link below.

<https://www.eadmissions.org.uk/>

Nursery Survey

The Government has requested that the school provides Nursery provision to parents who wish to use it during these times. Before we can deliver this, we need to know how many of our parents wish to use the facility so that we can then plan appropriately.



Please complete the form using the link below which will request basic information about you, your child and whether you wish to use the Nursery during Lockdown.

<https://forms.gle/ebeYUXXCnzBWutE29>

If you feel that you would rather keep your child at home with you then you may do so at this time. We will contact parents who want to use onsite provision in due course.

Please note that if you choose for your child to attend the nursery they will be expected to attend for their usual 3 hours per day - every week day. if your child attends mornings, you may have to attend afternoon sessions instead (or vice-versa) depending on numbers who apply."



Children's Centre Support for under 5's

Our Children's Centre is currently based in the school house on Dove Approach. There are staff working on site and virtually who can support you with advice. We are also hosting several sessions a week online that you can join with under 5's. There are lots of ways to find out more:

Call: **07392 196 124** or **07870 365 797**

Website: <https://www.bardcc.co.uk/>

Social media **Instagram: bard_cc**

Twitter: @BaRDCC

General Information



Free School Meals Update

Food parcels are currently being issued for those who are eligible for free school meals and are not attending provision on site.

The government has now confirmed that vouchers will be available shortly. As these give parents more flexibility we will move to this system. All eligible families will be contacted about this when we are sent the information (this may not be until next week).

If your circumstances have changed we would strongly suggest that you apply if you think you may now be eligible.

<https://www.newham.gov.uk/schools-education/free-school-meals/2?documentId=502&categoryId=20004>

Eat for Free Newham Consultation

Newham is consulting in relation to the Eat for Free scheme. This provides free school meals to all year 3, 4, 5 & 6 children when onsite even if they do not qualify as above. Due to budget pressures this may change and those not eligible for free school meals in those year groups may have to pay a contribution towards school lunches in the future. To find out more and have your say follow the link below or you can send any questions or comments to EatForFree>Returns@newham.gov.uk

<https://www.newham.gov.uk/council/eat-free-consultation>

Winter Reading Challenge



Children can pick up a bag of Ready Reads from their local library. This will be a bag of books pre-selected for children to read and grouped by either age, genre or interest. The aim of the challenge should you choose to accept it, is to read three books, collect a specially themed sticker for each book you read and a certificate when you finish.

Children can also access children's library books using our e-catalogue www.newham.gov.uk/libraries and can access these collections using their library card number and PIN or can create a temporary membership online for this purpose.

The library service are also extending the 'Everyone a Hero' drawing competition for children aged 3+ and writing competition for children aged 5+ both entry forms can be downloaded here

<https://bit.ly/39R9Ekb>

<https://bit.ly/3IXqDn2>

However children will not need to complete their entries using this form they can use whatever they like Word doc, postcard etc and either scan their entry to us at library.activities@newham.gov.uk or hand in to any Newham library.

Taste kitchen challenge

Can you create a recipe for Team GB? Enter a recipe creating competition for students aged 5–14!



Aldi and Team GB are challenging young people aged 5–14 to get creative and design an original recipe, inspired by Team GB. Enter from home or school for the chance to receive a host of exciting prizes and see your dish join Aldi's online collection of Taste Kitchen recipes – featuring on both the Aldi and Get Set to Eat Fresh websites. What's more, one overall winner – selected by our Aldi Athlete Ambassadors – will receive a piece of exclusive Team GB Tokyo 2020 signed merchandise and have their recipe showcased in print, with a dedicated page spread of an Aldi leaflet! Entries must be received by Friday 12 February 2021.

<https://getseteatfresh.co.uk/tastekitchenchallenge>



COVID Question of the week - Where can I find further information?

Covid information can be found on our website www.ellenwilkinson.newham.sch.uk simply click the parents tab at the top and you will see links to public health and Newham information.

Where can I get help?

Family well-being <https://www.nhs.uk/oneyou/every-mind-matters/>

Talking Therapies

<https://www.nhs.uk/conditions/stress-anxiety-depression/free-therapy-or-counselling/>

Mind (mental health advice & support) <https://www.mind.org.uk>

The Samaritans <https://www.samaritans.org> or call free on 116 123

CALM (Campaign Against Living Miserably) 0800 58 58 58 (daily 5 pm to midnight)

For children

<https://parentzone.org.uk/Ollee> Aimed at 8-11 year olds and their parents, Ollee helps families talk about difficult topics.

Kooth <https://www.kooth.com/> online support for 10 year olds upwards

Young Minds <https://youngminds.org.uk>

