



## ELLEN WILKINSON PRIMARY SCHOOL LOCKDOWN NEWSLETTER 1 - 6th January 2021



Dear Parents & Carers,

This is not the start of 2021 that any of us was hoping for, and we know everything may feel very overwhelming at the moment. So, I am sorry for the length of this newsletter, but we wanted to make sure we answered some of the questions you may have.

To hopefully make this a little easier we have done this in a question format so you can find the information you may need. However, the situation is changing very quickly at the moment and so please be aware that schools are hearing about changes at the same time as everyone else through news reports and statements in Parliament. We will send out confirmed details about changes when they are sent to us.

This is a worrying time for all of us and it is difficult to hold on to the positives when everything seems so dark, but please remember we still remain one community and EWPS is still here to support our children and families in any way we can. As more information becomes available including Newham specific support we will of course make sure we let you know.



**Take care and stay safe.**

**Sue Ferguson**

### **How will you keep in contact with us and how will we contact you?**



We will continue to send out weekly newsletters but please be aware that most of our admin team are currently having to self isolate and therefore we only have 1 member of staff on site for the next two weeks!

Therefore please email [info@ellenwilkinson.newham.sch.uk](mailto:info@ellenwilkinson.newham.sch.uk) rather than call us unless it is an emergency. This is because staff are still working in isolation and your query will be answered much more quickly than if you try to phone us!

### **How do I access onsite key worker provision?**

If your employment or child care arrangements have changed and you need to access onsite provision please make sure you have completed the main contact form as it asks for these details. We will then contact you to discuss arrangements and then ask you to complete a confirmation.



<https://forms.gle/cqnJhpVNz8m141wc7> [forms.gle]

### **What about Free School Meals?**



Those who are currently eligible have been contacted about whether you wish to have a food parcel arranged for you to collect from the school site. Details of this have been sent to you. We know the Education Minister mentioned vouchers in his

statement today but as a school we have not received any information about this. We will of course contact you again if this changes.

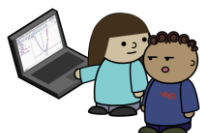
Please remember that if your child is attending onsite school they will receive a hot lunch here and so are not eligible for food parcels.

If your circumstances have changed we would strongly suggest that you apply if you think you may now be eligible.

<https://www.newham.gov.uk/schools-education/free-school-meals/2?documentId=502&categoryId=20004>

### Will my children get regular online learning?

Yes. All year groups including nursery have sessions with their teachers every day. Details of these were sent to you last weekend.



### Does my child have to participate with education?

Yes. Your child should be engaging daily with their learning. If your child is unwell please use studybugs or email us to let us know.

### I'm having problems with some of the technology or logins. What can I do?

The best thing to do is email us and we will then arrange for someone to call you to see if there is anything we can do to help.



### What about the laptops that were mentioned by the government?



There was an announcement that schools would be issued laptops to loan out for children to use remotely. Please be aware that the total number we are allocated is 35 and there are nearly 500 children in our school. Of these 35 we have received 7! There is currently no delivery date for the rest.

Priority for loan distribution is: Child Protection/ Child in Need, Looked After Children, FSM with no access at all and families with multiple children trying to use the same device. Even in these cases only 1 device may be able to be issued per household due to the limited number we will have.

The information about access to technology was a question on the updated contact form we sent you in September and multiple times since then. **Please do not contact the school.** We are working our way through these lists (and they are checked daily) and will contact you when/if we have devices available.

If you did not complete the updated contact information the link is

<https://forms.gle/cgnJhpVNz8m141wc7> [forms.gle]

### What is happening about year 6 SATs?

The Education Secretary announced in Parliament this afternoon that year 6 SATS will be cancelled this year. We have no further details at this time but are assuming children will be assessed based on their work and learning during the year. Please make sure your child continues to attend all lessons and completes all work as we still need to prepare them for secondary school.



### Are there any other changes I need to know?

As most children are working remotely there will have to be a few changes to current arrangements.

- **Class assemblies** - these will stop until further notice
- **House points and stars of the week** - will continue as normal (pencils will be given out when children return to on site school)
- **Celebration assembly** - We are hoping to continue a whole school virtual assembly every Friday, but this may take some time to set up as we are no longer now in school. We will keep you posted!
- **Parents Evening** - This will take place later in the spring term rather than early February.
- **INSET Day** - the INSET Day which was organised for the 25th January will now be moved to a later date so your child will still have access to teaching on this day.

### Can I still access support from the Children's Centre?

Absolutely! Our Children's Centre is currently based in the school house on Dove Approach. There are staff working on site and virtually who can support you with advice. We are also hosting several sessions a week online that you can join with under 5's. There are lots of ways to find out more:



Call: 07392 196 124 or 07870 365 797

Website: <https://www.bardcc.co.uk/>

Social media Instagram: bard\_cc

Twitter: @BaRDCC

### COVID Question of the week - What are the rules for Tier 5 lockdown?



We have put a poster on our website that sets out what the restrictions are

<https://www.ellenwilkinson.newham.sch.uk/attachments/download.asp?file=1964&type=pdf>

This and other information can also be found on our website

[www.ellenwilkinson.newham.sch.uk](http://www.ellenwilkinson.newham.sch.uk) simply click the parents tab at the top and you will see links to public health and Newham information.

### All of this is really difficult to cope with. Where can I find advice and support?

There are a number of sources of support available to you and we are regularly updating information on our website.



---

Family well-being <https://www.nhs.uk/oneyou/every-mind-matters/>

## Talking Therapies

<https://www.nhs.uk/conditions/stress-anxiety-depression/free-therapy-or-counselling/>

**Mind** (*mental health advice & support*) <https://www.mind.org.uk>

**The Samaritans** <https://www.samaritans.org> or call free on **116 123**

**CALM** (*Campaign Against Living Miserably*) **0800 58 58 58** (daily 5 pm to midnight)

## For children

<https://parentzone.org.uk/Ollee> Aimed at 8-11-year olds and their parents, Ollee helps families talk about difficult topics.

**Kooth** <https://www.kooth.com/> online support for 10-year olds upwards

**Young Minds** <https://youngminds.org.uk/>

