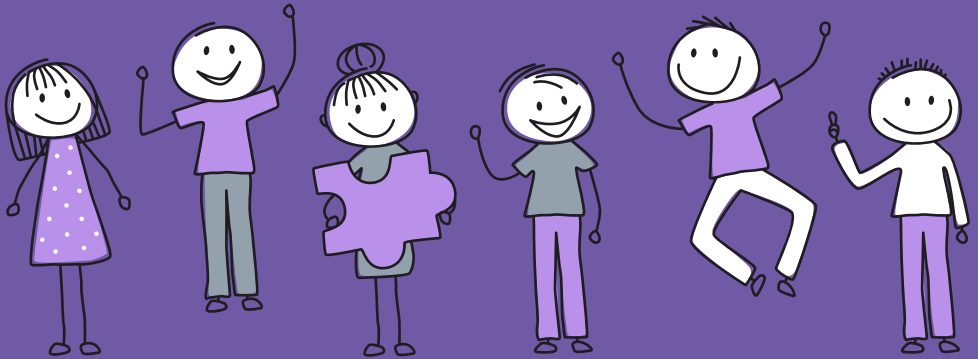


# WE ARE YOUTH SAFETY.

# WE ARE NEWHAM.



## NEWHAM'S APPROACH TO YOUTH SAFETY

# INTRODUCTION

In Newham we know that today's children and young people are the creators, thinkers and leaders and of the future. That's why all of our core plans are focused on giving Newham children and young people the best start in life – and ensure youth safety is everybody's business.

In Newham, we discuss, plan and work together with our young people, to make sure their voices, passions and hopes and dreams are heard, listened to and acted upon in all we do.

You can access information, support and help through the range of links and contact details shared here.

## 1. KEY INFORMATION FOR PARENTS, FAMILIES, CHILDREN & YOUNG PEOPLE

### Journey of a Child

On this page you can find the many activities and services available locally to support you and your family in Newham during a child's journey from birth to 25 years old. Visit our page to learn more about everything that's available: [www.newham.gov.uk/journeyofachild](http://www.newham.gov.uk/journeyofachild)

### Newham Family Information Service (FIS):

Click the link below to access for sign posting to services that support children, young people and their families in Newham.

<https://families.newham.gov.uk/kb5/newham/directory/family.page?familychannel=0>

### Our Newham Work Service:

Support is available to anyone aged 14 to 25. You can contact the team via the link below for help regarding finding jobs, internships, traineeships and further training opportunities: [www.ournewhamwork.co.uk](http://www.ournewhamwork.co.uk)  
[ournewhamwork.engagementteam@newham.gov.uk](mailto:ournewhamwork.engagementteam@newham.gov.uk)  
Tel: 020 3373 1101

### Alcohol and Drugs Support:

Change, Grow, Live (CGL) provides all drug and alcohol support services for Newham adults, children and young people across the borough, offering a wide range of free, confidential treatment and recovery support services for individuals affected by drug and/or alcohol use.  
Tel: 0800 652 3879

- Adults/all residents:  
[www.newham.gov.uk/health-adult-social-care/drugs-alcohol](http://www.newham.gov.uk/health-adult-social-care/drugs-alcohol)
- Young People:  
[www.newham.gov.uk/health-adult-social-care/drugs-alcohol/2](http://www.newham.gov.uk/health-adult-social-care/drugs-alcohol/2)

### Newham Domestic Abuse and Sexual Violence Support Service:

A confidential support service for all genders ages 16+. Providing support for all forms of domestic abuse and sexual violence.  
[www.newham.gov.uk/health-adult-social-care/domestic-violence-support](http://www.newham.gov.uk/health-adult-social-care/domestic-violence-support)  
Tel: 0808 196 1482

## 2. MENTAL HEALTH & WELLBEING OFFERS:

### Your Time:

Your Time is a free safe space which young people aged 5 to 18 years (or those aged up to 25 with special educational needs) can access to receive support and guidance on topics of their choice. For more information about the programme, visit the HeadStart Newham website.  
[www.headstartnewham.co.uk/activities/yourtime](http://www.headstartnewham.co.uk/activities/yourtime)

### **Kooth: A free counselling offer for young people aged 11-25 years**

Wellbeing and mental health support from fully trained and qualified counsellors is available every day of the year, including bank holidays. Please visit: [www.kooth.com](http://www.kooth.com)  
[www.koothplc.com/contact-us](http://www.koothplc.com/contact-us)  
Tel: 020 3984 9337

---

### **Bounce Back:**

This online programme supports young people and parents in Newham; it's full of tips to help you navigate life challenges, develop new strategies to deal with them and help you look after your health, body and mind. For more information on Bounce Back visit their website.  
<https://bouncebacknewham.co.uk>

---

### **Being a Parent**

Talk about your experiences and share your views in a safe, non-judgemental space, exploring themes including understanding feelings, managing behaviour, setting boundaries and building in family quality time. Find more information and sign-up details here.  
[headstart.programmeteam@newham.gov.uk](mailto:headstart.programmeteam@newham.gov.uk)  
Tel: 020 3373 8600

---

### **Newham's Five Ways to a Healthier Life**

This is a fantastic online booklet full of great guidance, advice and support for living a healthier life. Click below to gain more information across the five areas of focus which are Healthy body, Healthy mind, Healthy money, Healthy winter and Healthy COVID-19 prevention.  
[www.newham.gov.uk/coronavirus-covid-19/5-ways-healthier-life-1](http://www.newham.gov.uk/coronavirus-covid-19/5-ways-healthier-life-1)

## **3. KEEPING CHILDREN SAFE:**

In Newham, we offer a range of support and services to help keep our children and young people safe. Our key offers are:

### **Childrens Social Care and Early Help:**

Services are available 24/7 to support safeguarding and welfare concerns for children and young people who may be at risk due to exploitation, going missing from home or care or other concerns.

- In an emergency, please visit or call MASH (Multi-Agency Safeguarding Hub) here: <https://families.newham.gov.uk/kb5/newham/directory/family.page?familychannel=7>  
Tel: 020 3373 4600
  - To find out what support is available to you/your family from the Early Help Hub visit: <https://families.newham.gov.uk/kb5/newham/directory/localoffer.page?localofferchannel=4>  
Tel: 020 3373 4037
- 

### **Rescue and Response Service:**

This service supports young people across London up to 25 years old, who are involved in or affected by "county lines" activity. The offer includes:

- St. Giles A&E Hospital Project supports young people who attend hospital in an emergency due to injuries, violence or other safeguarding concerns. Contact them to find out more about this offer: [www.stgilestrust.org.uk/contact-us](http://www.stgilestrust.org.uk/contact-us)  
Tel: 020 7708 8000
- Abianda – a London-based project supporting young women with gangs and county lines concerns. Contact them here: [hello@abianda.com](mailto:hello@abianda.com)  
Tel: 020 7686 0520
- Safer London – a one-to-one support service available to young people and their families, tackling violence, abuse and exploitation  
<https://saferlondon.org.uk>  
Tel: 020 7021 0301

### **Newham Youth Zones:**

Youth Zones are safe and welcoming spaces open to all children and young people aged 10 to 18 (or up to 25 for those with additional needs or in need of targeted support). Our zones operate across Manor Park, Beckton, Canning Town, Stratford, Forest Gate, Plaistow, East Ham, North Woolwich and Green Street. In addition, our borough-wide SEND provision is facilitated by Ambition Aspire Achieve (AAA). You can find out more about our Youth Zones via the below options:

General Youth Zone information:  
[www.newham.gov.uk/children-families/activities-young-people-newham/2](http://www.newham.gov.uk/children-families/activities-young-people-newham/2)

Weekly updates:  
<https://padlet.com/YESLBN/YESProgramme>

- Beckton Globe Youth Zone: 07563 546726
- Forest Gate Youth Zone: 07999 601878
- Little Ilford Youth Zone: 07563 546725
- Shipman Youth Zone: 07999 601118

To watch our video about youth safety and find out more about the work of Newham's Youth Safety Board, its progress and achievements to date and everything else available across our youth safety offer please click here:

[www.newham.gov.uk/children-families/youth-safety](http://www.newham.gov.uk/children-families/youth-safety)

### **Youth Empowerment Fund:**

Do you urgently need books, sports kit or something else to support your learning or your ambition? Click here to find out more:

[www.newham.gov.uk/children-families/youth-empowerment-fund](http://www.newham.gov.uk/children-families/youth-empowerment-fund)

Email: [yefinfo@newham.gov.uk](mailto:yefinfo@newham.gov.uk)

### **Preventing Child and Exploitation Harm Hub (PCEHH):**

This weekly multi-disciplinary meeting delivers help to identify and engage with children and young people who may be at risk from any form of exploitation.

### **Children Over-represented Pathfinder:**

This offer supports Newham children and young people aged from six to 25 who are specifically from a Black, Asian, Roma or other ethnically diverse background. To make a referral for your child, find out more about the offer here: [www.newham.gov.uk/pathfinder](http://www.newham.gov.uk/pathfinder)

### **Act As 1: Our Voluntary Sector Working Together:**

In Newham, "Act As 1" pulls together services key voluntary sector organisations to deliver a range of services that allow your child to engage creatively, enjoy play and ensure they are kept safe, across Canning Town, Custom House and Plaistow South. Contact each organisation to find out more about the work they do and how they can help you below:

- Rights and Equalities In Newham (REIN)  
<https://www.reinuk.org>  
Tel: 020 7473 5349
- Fight For Peace  
<https://fightforpeace.net>  
Tel: 020 7474 0054
- Exit Foundation  
[www.exitfoundation.org.uk](http://www.exitfoundation.org.uk)  
Tel: 020 8004 7448
- Ambition Aspire Achieve (AAA)  
[www.theaaazone.com](http://www.theaaazone.com)  
Tel: 020 7511 4253

## HOW CAN I GET INVOLVED?

### **Community Assemblies programme:**

Come and share your views against how best to address challenges in your area. Our assemblies meeting programme gives you and your neighbours a voice in shaping your local areas and creating a shared vision for the place where you live, work, learn or want to see develop further. Please click the link below to sign up!

<https://newhamco-create.co.uk/en/folders/assemblies>

---

### **Youth Independent Advisory Group (YIAG):**

Newham young people who want to share, get involved, lend their voice and influence how you and your peers can work together with the police can sign up to the YIAG forum via Instagram: [www.instagram.com/detachedyouthteambn](https://www.instagram.com/detachedyouthteambn)

---

### **Connect to Policing community conversations through our Independent Advisory Group (IAG) and Safer Neighbourhood Board (SNB):**

Parents and Carers can also link into our overarching Independent Advisory Group (IAG) and Safer Neighbourhood Board via the links below to share their views and join the on-going conversation regarding what policing in Newham:

[www.newham.org.uk/iag](http://www.newham.org.uk/iag)  
[www.met.police.uk](http://www.met.police.uk)

---

### **Children and Young People's Rights:**

You can help improve the way we look after children and young people by joining our Children in Care Council, School's Council, Pupil Parliament and more. Find out more about getting involved here: [childrensrights@newham.gov.uk](mailto:childrensrights@newham.gov.uk)

### **Newham Connect:**

We're reaching for the stars in Newham through the launch of our Next Gen Newham offer, Young People's Charter and Plan and more. Please click the link below to read more, connect and stay connected via the link below:

[www.newhamconnect.uk/Article/94555](http://www.newhamconnect.uk/Article/94555)

---

### **Issues of Concern Survey\*:**

All Newham children, young people and adults can use this anonymous reporting tool to tell us about concerns you may have about activity, places and spaces in your local area by completing our survey through the link below:

[www.newham.gov.uk/children-families/youth-safety/10](http://www.newham.gov.uk/children-families/youth-safety/10)

\*NB: This link is not for reporting crimes or use in an emergency that requires an immediate response – please always use 999 and or 101 on those occasions.