



## ELLEN WILKINSON PRIMARY SCHOOL NEWSLETTER 3 - 21st September 2022



### Dear Parents & Carers,

Thank you for your support as we have moved through the period of national mourning for Her Majesty Queen Elizabeth II. The condolence book, that so many of you have added to, will now be stored in the school library with photos and newspaper accounts of the last 10 days.

We will now be proceeding with the usual celebrations and acknowledgements as a school and therefore I am delighted to confirm that pupil positions of responsibility, stars of the week and work of the week will be announced on Friday and included in next week's newsletter. Our Harvest Festival will also take place next week as planned and so any support with donating items for the local food banks would be really appreciated. Thank you.

**Take care and stay safe**

**Sue Ferguson**

### Ms Mustafa's Service

Thank you for all your messages and condolences since informing you about the sad news that Ms Mustafa has died. Her family and the school have been truly touched by the messages received.



### **Service Arrangements**

Mrs Mustafa's funeral is due to be held at midday on Thursday 29th September and will be attended by a representative group from the school. Her service is also being live streamed so that staff who can not attend can pay their respects.

Her family has now asked for this invitation to include parents and family in the local community.

Therefore if you would like to attend the live streamed service at the school could you please use the link below so we have an idea of numbers.

### **Book of condolence**

Ms Mustafa's online book of condolence will remain open until her service. Please use the link below if you wish to leave a message for her family.

<https://www.forevermissed.com/abimbola-olufunmilayo-mustafa-inuayo/about>

## General Information

### Harvest Festival

As part of our Harvest Festival celebrations we are collecting food for two local Food Banks which help people in crisis.

- All tinned, packet and dry goods are accepted.
- Please make sure items are in date and unopened.
- There will be a box in the playground each morning and each afternoon from tomorrow (22nd) for children and parents to put in donations.
- All items need to be sent in by Thursday 29th September please in time for our harvest festival the following day.

**Thank you for helping us to help others within our community.**

### **Message from the Chair of Governor**

The Governing Body met last Thursday. As this was the first meeting of the Autumn term it included agreeing the school development priorities, looking at data from last academic year, finalising meeting dates, link governor roles, committee membership and reviewing a number of policies which need to be confirmed at the beginning of each year.

Ms Ferguson briefed us on the latest developments and responsibilities for governors in Keeping Children Safe in Education. We have also arranged for all governors to complete a new online Safeguarding course in the next few weeks.

We looked at the results from the parents' survey completed towards the end of last term. It was pleasing to see such a large number of forms handed in (169) as well as such high proportions of positive responses. It was also helpful to read comments and suggestions made about what parents feel are the successes of this school and how we might improve. The survey results will be published in the governors newsletter later this term.

Governors also spent some time considering the Government's Education White Paper and it's possible implications for schools in the future.

**Marie Christie, Chair of Governors**



### **Updated Dates for your diary**

**Tuesday 20th September** - Parents meeting – Fair Play House (virtual)

**Thursday 22nd September** - Year 1 parents meeting

**Thursday 29th September** - Harvest festival (Date change)

**Thursday 29th September** - Nursery & Reception – Attendance & Punctuality Parent Meeting



### **Fundraising for The Princess Trust**

Layla in Year 1 is fundraising for The Little Princess Trust by cutting off around 11 inches of hair on 10th September. The hair will be donated to the charity which they will use to turn into a free wig for a child with cancer.



If anybody would like to make a donation or would like to see Layla's lovely new hair do then check the link:

<https://www.justgiving.com/fundraising/laylasbigcut>



### **Free School Meals**

Every primary school aged child attending school in Newham still has the opportunity to have a free school lunch even if their parents/carers are not in receipt of one of the qualifying benefits for free school meals.

**Reasons to apply** - free after school clubs and discounted trips. If your child is eligible for Free School Meals they will no longer pay for their after school clubs with us and any residential trips are offered at a discounted rate.

Extra funding for your child's school too!

Whether your child is at primary school and receiving a free meal, has packed lunch or you are currently working, we request that the parents/carers of all primary and secondary aged children in Newham should still register for free school meals, even if you don't think you are currently eligible. Once we have the application, if at any time a family is in receipt of one of the qualifying benefits for free school meals we will automatically update our records and their school will receive additional funding known as Ever6 Pupil Premium. This is up to £1,320 depending on the child's age!

### **Applying for Free School Meals**

To apply for free school meals please go to:

[https://newham-self.achieveservice.com/service/Application\\_for\\_Free\\_School\\_Meals](https://newham-self.achieveservice.com/service/Application_for_Free_School_Meals)

We will also be holding two drop in sessions so that you can see if you are eligible on:

**Wednesday 28th September, 9.00am-9.30am & Thursday 29th September 2.45pm-3.15pm**

### **Free Breakfast Items**

We have been fortunate enough to secure funding for free breakfast items for the remainder of the school year. This term children will be bringing home a box of Shreddies or Cheerios and a bag of bagels.

If you would like your child to receive these items weekly please complete the following form:

<https://forms.gle/oEKKM8Gyi3yYUvT3A>

Please be aware if your child is currently receiving these items you will still need to complete the form to confirm that you would still like to take advantage of the scheme.

### **Reminder - School Uniform**

With the summer now coming to an end children need to bring a coat with them to school each day.

We would also like to remind you about some parts of our uniform policy:

#### **Labelling**

We would also like to remind you that ALL of your child's clothing including P.E bags and reading bags, must be individually labelled either with an indelible pen or iron on labels.

#### **Jewellery**

Items of jewellery are potentially dangerous and can be lost. No jewellery should be worn apart from a watch or earring studs - NO HOOPS please.

### **Year 6 Secondary Transfer**

Year 6 children should have brought home a copy of the booklet ***"We are going to secondary school"***. This explains the process of applying for a secondary school place and when school open evenings are taking place. You can also find this information using the link below.

[Moving from Primary to Secondary](#)

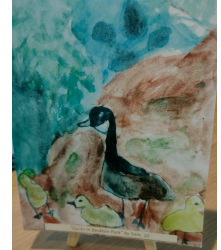
If you have any problems in submitting your application please contact a member of the office team.

## **Our Learning**

### **Beauty of Beckton**

You may remember towards the end of Summer Term last year, we gave the children the opportunity to create a piece of art on the theme 'Beauty of Beckton'. On Thursday 8th September Ms. Sreedharan and Mr O'Dowd represented the school at the opening of Attic Self Storage, where they saw the artwork submitted by EWPS children. The pictures look fantastic as you can see below and they are on display in the foyer of their premises on Claps Gate Lane near Sainsburys. Well done to Rhea and Mikaela in Yr4, Liliana and Olivia Yr 6, and Sam T from last year's Yr 6W class.

**A massive 'Thank You' to all others who entered, as you helped the school win the overall prize of £500 worth of art supplies courtesy of Attic Self Storage!**



## **Learning Tips**

### **Writing**



Ask your child to **think of some fabulous words to use in their story writing**. They might be long words or simple ones, or they might be great descriptive words or words that help create pace and tension.

### **Maths**

Shopping at your local supermarket could be great for your child to get familiar with numbers and the concept of money. This week get them to calculate the change they will receive from the shopping or estimate the total amount.



### **Well-being** **Being a Parent**



Parenting isn't always easy. Although it's often amazing and rewarding to watch your children grow up, and to help them learn to be independent, it can also be really hard work. Here are our tips for looking after your child while also looking after yourself.



<https://www.youngminds.org.uk/parent/parents-guide-to-looking-after-yourself/>

### **E- Safety**

If your child already has a smartphone or tablet, or you're planning to get them one, see our 5 top tips to make sure it's set up to give them a safer online experience.



<https://www.internetmatters.org/resources/mobile-health-check-for-kids-smartphones-and-tablets/>

**Community, Wellbeing and Support**

**WE ARE  
CARING.**

### **Parent Survey**

The London Borough of Newham would like to hear from parents and carers about their childcare needs. Your views are important in helping us decide how to shape services that will be useful for you.

We are asking parents and carers in Newham whether they use childcare, how they use it, what they think about it and whether they would like to use more.

The questionnaire will take around 10 minutes to complete. The closing date for completion is 5pm on Friday 2nd December 2022. We are really keen to ensure your views are taken into account. Any parent completing the survey can opt in to be entered into a free prize draw for a chance to win £100 of shopping vouchers.

At the end of the questionnaire, there is an opportunity for you to request further information about funded early education, help with childcare costs and childcare providers in Newham.

To access the questionnaire click on this link: [www.newham.gov.uk/childcareparentsurvey2022](http://www.newham.gov.uk/childcareparentsurvey2022)

**Help us to help you! Take the survey now!**