



ELLEN WILKINSON PRIMARY SCHOOL NEWSLETTER 19 - 31st January 2024



Dear Parents & Carers,

As mentioned in last week's newsletter, we have come to that stage when we review and evaluate the curriculum offered to all of the children at our school. **We would like you to take part in this process by completing our parent/carer survey.** This will enable us to capture your ideas and opinions, which will then feed into the curriculum review.

The **deadline for response has now been extended to: 9am Friday 2nd January.**

The survey can be accessed via this link: <https://forms.gle/RfkUjcQYn7VBbfiz9>

REMINDER: School will be closed to pupils on Monday (5th February) for a staff training day.

Finally, we would also like to extend a warm welcome to Miss Cumberbatch, our newly appointed receptionist and admissions and attendance officer.

Sue Ferguson & Janice Owen-Amadasun

General Information

Parents' evening booking



Parents' Evening will be taking place Thursday 8th February,
3:30-7:00 pm.

Appointment slots will be made available on Parentmail
this **Thursday (1st Feb), at 8am.**

Slots will be allocated on a first come first served basis. Booking will
then close at midnight on Tuesday 6th February.
We look forward to seeing you all then!

Book Fair

We are pleased to announce that the book fair will be
arriving in school next **Wednesday, 7th February.**

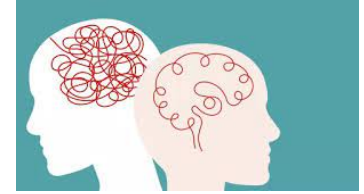
Children will have the opportunity to purchase books after
school, from **3:15pm - 3:30pm, in the school hall.** The fair
will run from **Wednesday through to Friday** and will also
be available during Parents' evening.



Please note that the school gains rewards from books
sold, which can then be spent on books for pupils and
classroom resources.

Introduction to the Wellbeing in Newham Schools Service and Mental Health Awareness workshop for parents - Tuesday 27th February

This session will involve understanding the Wellbeing In Newham School (WINS) Service and the support provided for primary schools, including ours, and what this looks like.



An overview of what mental health is and the stigma around mental health, will also be covered. There will be an opportunity to also discuss what symptoms and signs children might display and how to recognise these.

The workshop will take place at the school and be led by Anna, who is assigned to our school as part of the WINS service as a Mental Health support worker and is a trained cognitive behavioural therapist.

Date: 27th February 2024

Time: 2:45-3:15 pm

Location: Ellen Wilkinson Primary School - school hall. Access via Mitchell walk gate.

Collections

Please read below for important information regarding collections

At EWPS we believe that it is in a pupil's best interest for an adult to bring them and collect them from school, whatever year group they are in.

This is to make sure:

1. Children are safe on their journey to and from school.
2. It provides an opportunity for staff and parents to maintain informal contact and
3. That children are aware that the school and their parents are working in partnership.

However, it has come to our attention that some children in our Nursery to Year 2 classes may be being collected by older siblings, and those collecting those children may themselves be under 16 years of age.

The School's Collection and Walk Home Policy can be found here:

<https://www.ellenwilkinson.newham.sch.uk/attachments/download.asp?file=2226&type=pdf>

As general guidance:

- 1) No school child that attends EWPS in a Nursery, Reception or Years 1 or 2 class should be collected by anyone under the age of 16. If this happens then we should have clear written parental consent.
- 2) No school child that attends EWPS should be collected by anyone under the age of 14, irrespective of the class attended

We will be contacting current Year 3, 4 and 5 parents separately to understand your collection requirements. All other parents should familiarise themselves with our current Collection Policy and contact the school office if you have any further questions.

If you have any further questions regarding this, please speak to the front office.

February Forest School Holiday Club



FEBRUARY HALF TERM

Forest School Holiday Club
Monday 12 Feb & Tuesday 13 Feb
10am- 2pm
Nature exploration, tool use, nature crafts and more! Drop off sessions for ages 6- 11 years.
Day 1: Ellen Wilkinson Primary School
Day 2: Beckton District Park South

Bushcraft Nature Walk
Thursday 15 Feb
10am- 12pm
Nature walk led by bushcraft leader Kat— learn about local flora and foraging edible plants.
All ages welcome.
Meet at Will Thorne Pavilion Car Park

Family Campfire
Friday 16 Feb
10am- 1pm
Nature connection, free play, music and campfire cooking, ages 3- 8 years (siblings welcome).
West Ham Park
Wildlife Extension Garden

Book via our website
www.curiousbynaturelondon.co.uk
Email for more info
info@curiousbynaturelondon.co.uk

PEOPLE'S POSTCODE LOTTERY SOCIETY TRUST

During the February half-term **Curious By Nature** (Forest School) will be working with us to provide 2 days of forest school activities for some of Ellen Wilkinson Primary School pupils (for 6-11 year-olds).

The first day will be on the Ellen Wilkinson Primary School grounds and the second day of activities will take place at Beckton District Park South.

The children will be supported by three Level 3 qualified Forest School Leaders. If you book a place for your child please provide them with a healthy nut free packed lunch and a water bottle.

Please also ensure they are dressed suitably for the outdoor activities with appropriate shoes. If you would like more information please see the flyer (left) for contact details and information.

Our Learning

On Friday 19th January, we welcomed a group of performers from the Confucius Institute into our school. They put on an absolutely amazing performance.

It was a celebration of Chinese culture, in the lead up to the Chinese New Year. This year is the year of the dragon!

Some year groups also had the opportunity to take part in workshops in martial arts, dance and calligraphy!

We were in awe of the talent and the culture that was shared and can't wait to welcome them back next year.

Miss Kahraman



House Winners and Stars of the Week - 26/01/2024



House Winners



Every child is in one of our 5 houses.

They can earn points for their house by showing our 5 school values and by supporting other children in the school.

Each week the House with the most points becomes House of the Week. They have a star added to their chart in the hall. The House with the most stars at the end of the year gets an afternoon at the park with ice lollies too!

Last week's House winners were: Green and Blue houses!

	Kathee Johnson	Malalah Yousafzai	Michael Rosen	Ade Adepitan	Marcus Rashford
Guppy 1	James	Raima	Elise	Jonaih	Sara D
Guppy 2	Hanna	Bailey	Sara B	Michea	Nikol
Lionfish	Adam	D'or	Ziyarah	Sophia B	Aliza
Clownfish	Tilly	Adam	Safa	Elise	Hooriya
Jellyfish	Samuel	Paula	Ariya	Ayana	Michaela
Starfish	Ibraheem	Laurynas	Ishmaeel	Khadija	Izabella
Turtle	Alisha	Sofia	Nicolas	Mia	Tope
Lobster	Gaia	Nicole	Natali	Meta	Darius
Octopus	Deborah	Zain	Lakin	Hannah	Cindy
Seahorse	Daniel M	Rokhaya	Sumaiya	Markas	Kemi
Stingray	Saarah	Minahil	Tahmid	Jessica	Milana
Dolphin	Elena	Waraka	Maksym	Philip	Emma
Shark	Precious	Alan	Boston	Daniel	Keiaana
Whale	Afia	Kajus	Ulliel	Artjoms	Fisayo

Work of the Week (only 1 per year group)

Year Group	Child's Name	Context of work
Guppy	Caua	For writing an amazing description of a building.
1	D'or	For using her imagination so well when planning her story.
2	Feliks	For working very hard to improve his handwriting. .
3	Jibrail	For independently writing a descriptive adventure plan.
4	Aroush	For producing a great poster in RE showing the different ways places of worship serve our community.
5	Mikaela	For working extra hard on her maths this week.
6	lynas	For her use of scientific observations to compare and contrast.

Certificate Mentions

Certificate	Class	Who?
TTRS Breakthrough Artist (Under 6 seconds)	Seahorse	David O
TTRS Headliner (Under 4 seconds)	Turtle Lobster	Genesis Dawud
TTRS Rock Stars (Under 3 seconds)	Turtle Lobster	Rida Shezhad
TTRS Rock Legends (Under 2 seconds)	Turtle Lobster	Austeja Sophia, Nefeli
TTRS Rock Hero (Under 1 second)	Seahorse	Ryan
Lexia	Lobster Whale	Kevin - Level 10 Liam - Level 13
Pen Licence	Turtle Lobster Stingray Dolphin	Austeja, Sofia Nicola, Meta Olivia Diana

Special Mentions (non certificate)

Lobster Class	For an amazing assembly on the BFG. Mrs Willis and Mrs Cojocariu are extremely proud of you - well done!
The group of Y5 children who went to Stratford library	We received so many compliments about what a wonderful and well behaved bunch you were. You really made the school proud. Miss Dualeh and Miss Davison are very proud of you!

Diary dates - February

Mon 5th	All day	N/A	INSET DAY – SCHOOL CLOSED TO PUPILS
Thurs 8th	3.30 – 7 p.m.	All	Parents evening
12th – 16th	HALF TERM		
Thurs 22nd	2.45 pm	Hall	Year 2 Jellyfish Sharing Assembly
Thurs 29th	2.45 pm	Hall	Year 2 Starfish Sharing Assembly

Community, Wellbeing and Support



UK Health Security Agency

Measles: Are you protected?

You need **2 doses** of the **MMR vaccine** for lifelong protection.

If you haven't had **both doses**, you could be at risk.

Contact your GP practice and book an appointment if you're not up to date.

Measles cases are rising. Get vaccinated

Measles spreads very easily among those who are unvaccinated, especially in nurseries and schools. It can be a very unpleasant illness and, in some children, can be very serious. Vaccines are our best line of defence against diseases like measles and can help stop outbreaks within our community.

If you're a parent or carer, please ensure your children are up to date with their two free MMR doses. You can do this by checking their red book or contacting your GP practice. If you're an adult who missed out on the jabs as a child, you can catch up for free at any time by simply contacting your GP.

Find more information on Measles >

Find details of upcoming catch-up clinics for school-aged children >

Join the Cycle Sisters 'Smiles and Miles Challenge'



Cycle Sisters, an award-winning charity, is holding their annual winter cycling challenge for women from

1-29 February.

The Smiles and Miles Challenge aims to support and inspire cycling.

Sign up and choose your personal miles target, record your rides, and enjoy the freedom of being out on your bike.

Find more information on Smiles and Miles 2024 >

Our Newham Support

Newham are working hard to support those most in need. Our Newham services have seen significant increases in requests for help, particularly from families requesting help with energy bills and basic food.

The rising cost of living is affecting us all, whatever your circumstances, Our Newham Money is here to help and support with your financial wellbeing.



If you need help or advice, it's available from **Our Newham Money** (financial wellbeing support and advice), **Our Newham Work** (finding work, apprenticeships and training) or **Employment Rights Hub**.

You can also find out more about food support from the **Newham Food Alliance**, including how to refer yourself or someone in need.

(Please click on any of the sections above, in red, for more information.)