



ELLEN WILKINSON PRIMARY SCHOOL

NEWSLETTER 33 - 11th June 2025



Dear Parents & Carers,

Mrs Ferguson's memorial will take place on Saturday 14th June 2025 2- 4pm
Please see the link below to confirm your attendance.

<https://forms.gle/DUssmCfS8dPMf6zY8>

Sports days are scheduled for next week - **17th - 20th June**. Please see the grid below

SPORTS DAYS DATES & TIMES	Guppy 1 & Morning Nursery	Guppy 2 & Afternoon Nursery	Years 1, 2 & 3	Years 4, 5 & 6	LE
Dates	Thursday 19th June 9:30 - 11:15	Thursday 19th June 1:15 - 3:00	Tuesday 17th June All Day	Friday 20th June All Day	Wednesday 18th June 10:00 - 11:30
Reserve dates (if cancelled due to weather)	Thursday 26th June 9:30 - 11:15	Thursday 26th June 1:15 - 3:00	Tuesday 24th June All Day	Friday 27th June All Day	Wednesday 25th June 10:00 - 11:30
Length of sports day	Half day (morning)	Half day (afternoon)	Whole day	Whole day	Half day
Parent access times	9:30 - 11:15 am	1:15 - 2:45 pm	1.30 - 3.00 pm	1.30 - 3.00 pm	9:30 - 10am
Parent access gates	Reception gate (by Little Ellies)	Reception gate (by Little Ellies)	Mitchell Walk gate (back of the school)	Mitchell Walk gate (back of the school)	LE entrance

Packed Lunches

Thank you to all parents who send their children in with healthy packed lunches. Please be reminded that packed lunches should contain healthy options which agree with our school ethos.

Janice Owen-Amadasun
Headteacher

General Information

Pre-worn uniform

We have a stock of pre-worn uniform, mostly jumpers, which are available to parents on request - at no cost. It's often convenient to have a spare jumper in case one gets muddy or needs a wash. All the jumpers are washed and checked before sending them out. Please email eco@ellenwilkinson.newham.sch.uk, if you would like to have one sent home in your child's book bag, giving their name, class and approximate size.



This is also a reminder to label all your child's clothing to avoid losing it!

Mr O'Dowd

Celebration Assembly

House Winners (6th June 2025)



Every child is in one of our five houses. They can earn points for their house by showing our 5 school values and by supporting other children in the school. Each week, the House with the most points becomes House of the Week and they have a star added to their chart in the hall. The House with the most stars at the end of the year gets an afternoon at the park with ice lollies too!

The House winner last week was: Michael Rosen (Blue house)

Community, Wellbeing and Support



You don't have to be alone

This week is Men's Mental Health Week (9 - 15 June).

One in eight men in the UK experience a common mental health problem such as anxiety, depression, or stress.

Yet many don't speak out or seek help which can leave many men feeling isolated or unheard.

To help change that, **Plaistow Big South Local** is holding a session on 26th June which will have a special focus on men's mental well-being — creating space for honest conversations, support, and reflection.

Discover more opportunities to get your mental health in shape >

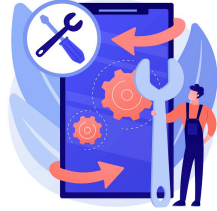


Funded childcare for working parents – Apply now for 30 hours from September

From September, the funded childcare for working families will expand to 30 hours. It means eligible working families can now apply for 30 hours of childcare from the term after their child turns 9 months until they reach school age. Don't miss out! Apply for your childcare code now to start using the hours from September. **What you need to do:**

- **Check if you're eligible**
- **Apply for a code online on GOV.UK**
- Apply early. The deadline is 31 August
- Speak to your childcare provider – check they offer the hours you need
- Keep your code up to date – reconfirm your details every 3 months

Learn more about free childcare if you're working >



Fix, Swap & Recycle at the FREE Green Street Repair Café

In partnership with East London Waste Authority and Newham Council, our next Repair Café takes place on Saturday 14th June, 11am – 2pm at Katherine Road Community Centre, E7 8PN.

Get free help with electrical, textile and bike repairs, swap clothes, and recycle your unwanted electricals.

**No booking needed - just turn up!
One repair per person, first come first served.**

Learn more about repair cafes in Newham and beyond >



Our Newham: Empowering residents and businesses with confidential advice and support

Our Newham is the council's service exclusively for Newham residents supporting you across five programmes: Money, Work, Business & Enterprise, Learning & Skills and Youth.

From helping residents maximise their income and kickstarting career journeys to supporting local businesses and start-ups, find out how Our Newham can help give you the boost you need at: www.newham.gov.uk/ournewham or come and visit us at **112-118 The Grove, E15 1NS**